



ZULTYS

SMARTER COMMUNICATIONS

Proximiti Quick Start ITSP Setup

Author: Zultys Technical Support

This document covers how to set up a Proximiti account. This is a quick set up guide. It assumes you are familiar with all of the ITSP Setup and ALG fields and tables in the Zultys MX. For further details, and more detailed steps, please refer to Document 0000000112 Proximiti.pdf available from Zultys Technical Support

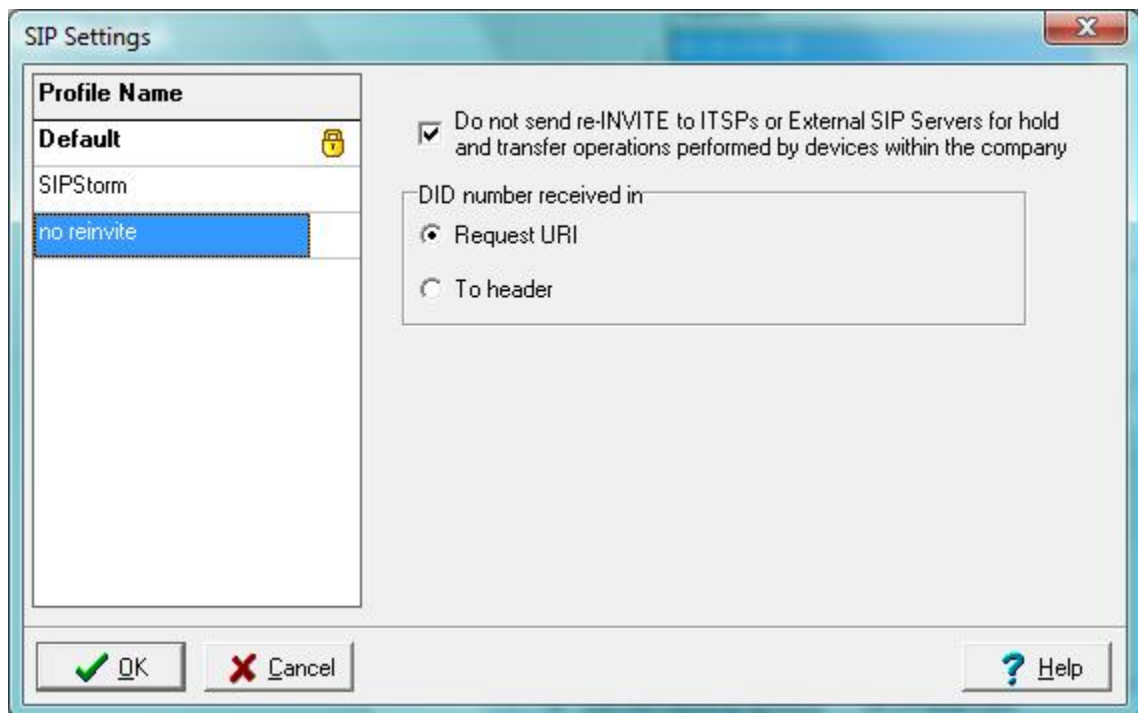
Contents

1.1	CREATE A CUSTOM SIP PROFILE	2
1.2	CONFIGURE THE ACCOUNT	3
1.3	AUTHENTICATION.....	5

1.1 Create a custom SIP Profile

In the Admin UI goto Provision → SIP servers and ITSPs

Click on SIP Profiles button,

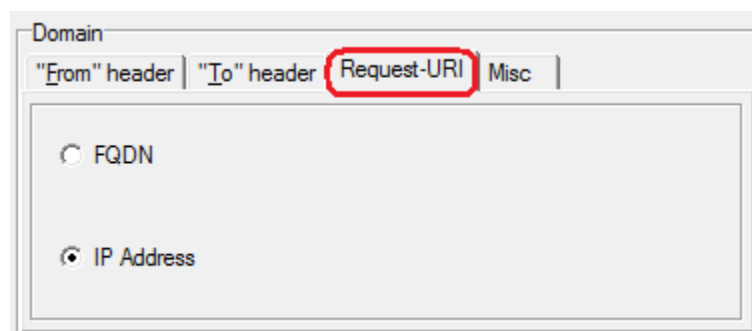
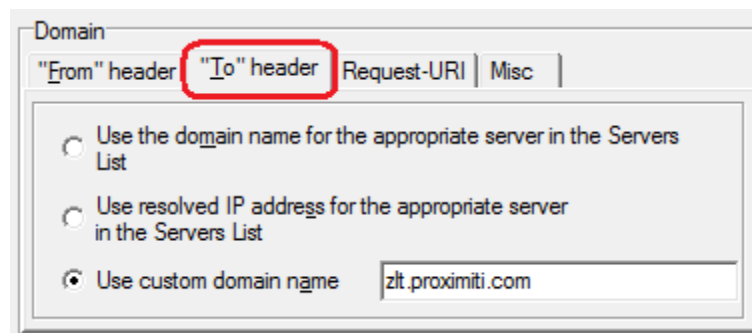
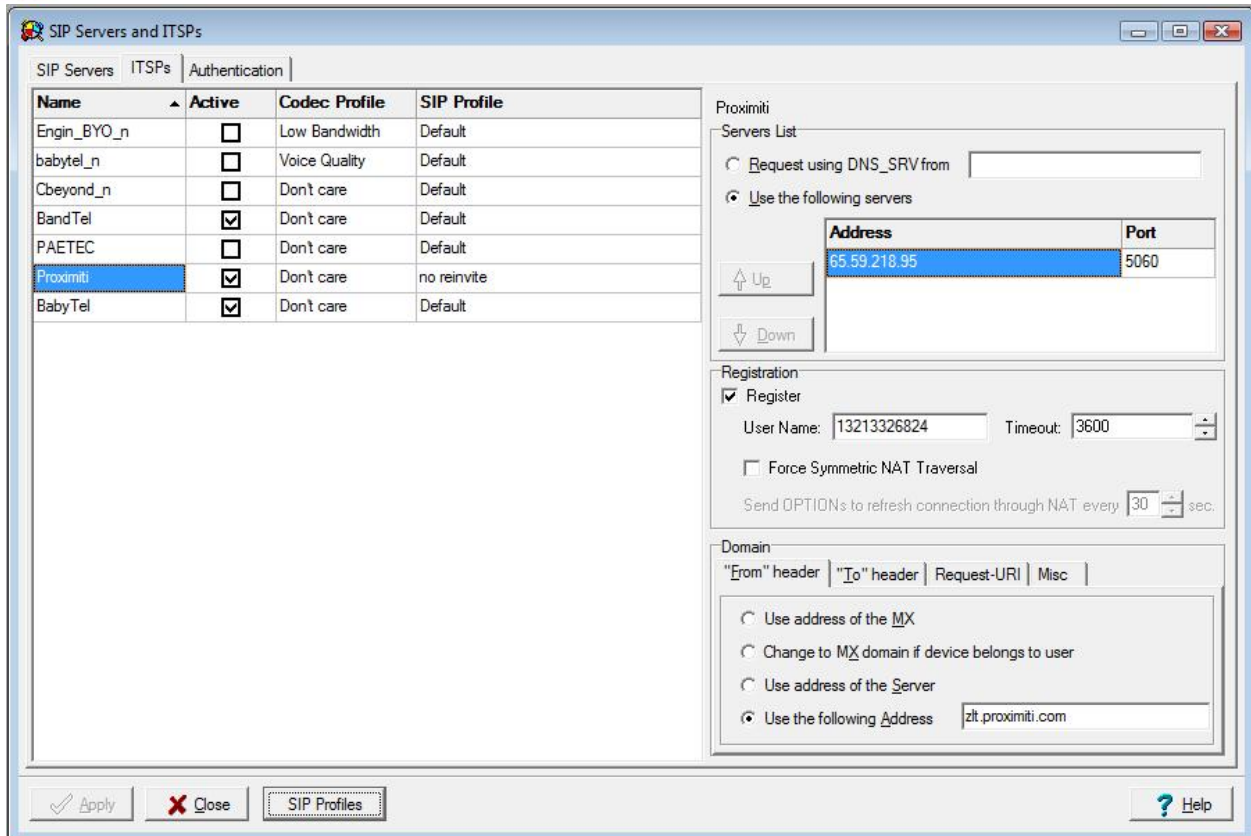


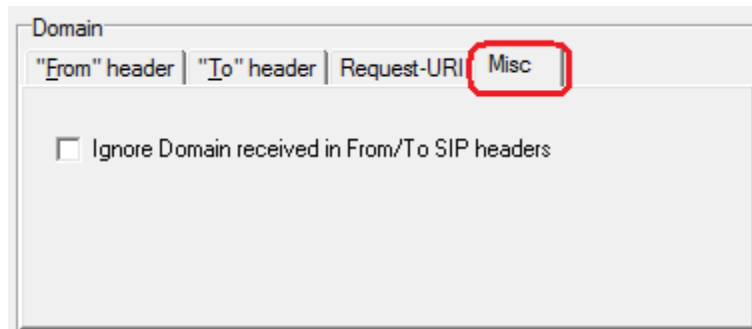
Create a new profile named "No Re-INVITE", select the option not to send re-INVITES and to look for the DID numbers in the "Request URI". Click the OK button to save the options and close the window

1.2 Configure the account

Enter the following information

- Name: Proximiti
- Active: Check
- Codec Profile: Don't Care
- SIP Profile: no reinvite (the new profile you created before)
- Use the following servers: the IP address given to you by Proximiti
- Port: 5060
- Register: checked
- Username: user name/phone number given by Proximiti
- From header: Use the following address: address given to you by Proximiti
- To header: Use the following address: address given to you by Proximiti
- Request-URI: IP Address
- Misc: nothing checked





1.3 Authentication

The authentication tab is used to define the authentication information for realm based authentication.