

Technical Publications

December | 08



ZULTYS

SMARTER COMMUNICATIONS

Proximiti ITSP Setup

Author: Zultys Technical Support

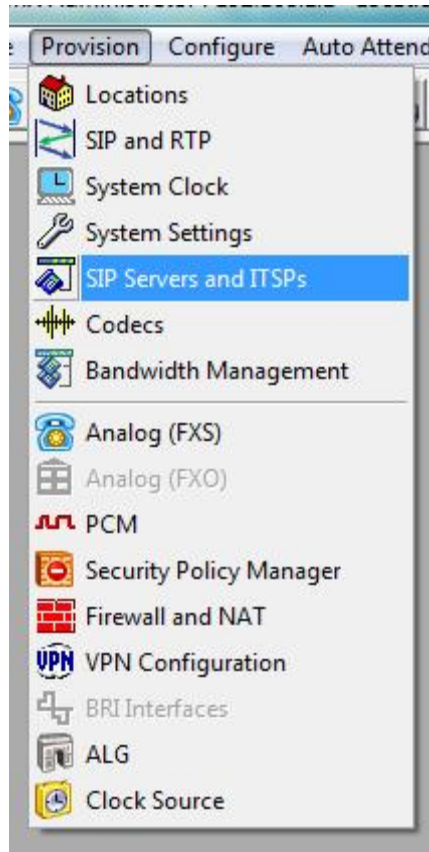
This document covers how to set up a Proximiti account.

Contents

1.1 CREATE ACCOUNT.....	2
1.1.1 SERVERS TABLE.....	3
1.1.2 PROPERTIES TABLE.....	5
1.2 CREATE A CUSTOM SIP PROFILE	6
1.2.1 PARAMETER TABLE.....	7
1.3 CONFIGURE THE ACCOUNT.....	8
1.4 AUTHENTICATION.....	10
1.4.1 TABLE PARAMETERS.....	10
1.4.2 EDITING THE TABLE.....	11

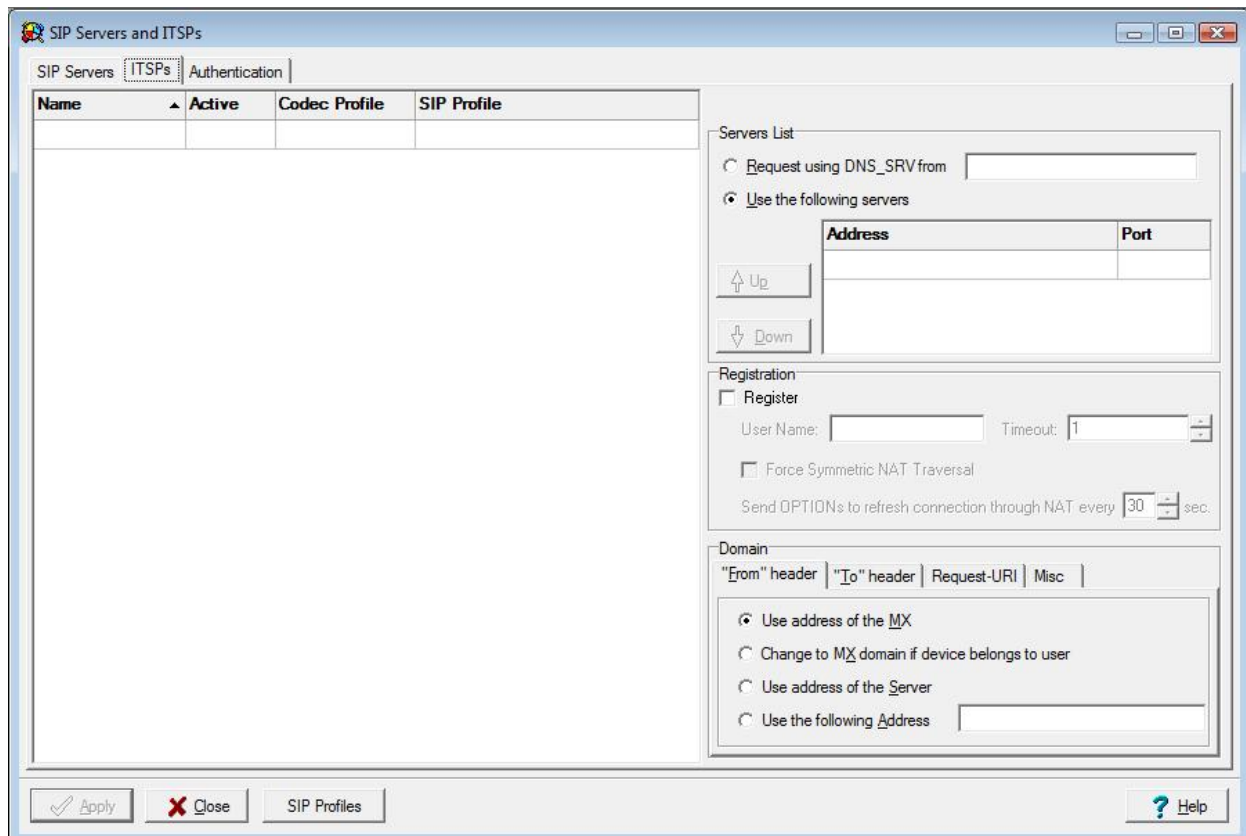
1.1 Create Account

In the Admin UI goto Provision → SIP servers and ITSPs



This will bring up the SIP and ITSP configuration screen. It has three (3) tabs along the top. To configure SIP server click on the *SIP* tab, for ITSPs click on

the *ITSP* tab, and to set up the authentications click on the last tab *Authentication*.



The SIP Servers and ITSPs panels each comprise two sections:

- The Servers Table, located on the left side of the panels, lists the servers that provide voice session access to MX devices.
- The Properties Table, located on the right side of the panel, configures the address used to access the servers and specifies transmission characteristics of SIP packets that set up the voice sessions.

1.1.1 Servers Table

The Servers table in the SIP Servers and ITSPs panels lists the SIP servers accessed by the MX to establish voice call sessions. Each row corresponds to a SIP server. The following parameters identify the characteristics of each SIP server.

- **Name:** This parameter identifies the SIP Server to the MX. Other UI windows, such as the Dial Plan: Routing panel, references SIP Servers by their names.
- **Active:** This parameter specifies the active status between the MX and the SIP server. If this parameter is not selected, the MX cannot use the specified SIP server to route a call.
- **Type:** This parameter specifies the method that incoming calls from the SIP server are handled by the MX. Valid parameter settings include:
 - **Internal:** The number specified in the SIP INVITE is treated as a dialling pattern that is evaluated by the Routing panel of the Dial Plan window.
 - **External:** The number specified in the SIP INVITE is treated as a DID and routed to the user that is assigned to that number. Calls with unrecognized DID numbers are handled as specified by the Outside panel of the Dial Plan. All servers in the ITSP panel are external. This parameter is not listed in the Servers table of the ITSP panel.
- **Codec Profile:** Specifies the list of codecs that the SIP server can use for negotiating communication settings with other SIP devices. Codec Profiles configured in your system are listed in the Codec Profiles window.
- **SIP Profile:** SIP profiles define SIP packet characteristics for packets utilizing the specified SIP server. Press the SIP Profiles button located at the bottom of the panel for a list of SIP Profiles and their definitions.

To add a SIP Server to the table, right click the mouse while pointing in the table and select New. Enter the server parameters in the new row.

To edit an existing SIP Server, double click in the appropriate cell and enter the new information.

To remove a SIP Server from the table, select the server, right click the mouse, and select Delete from the menu.

1.1.2 Properties Table

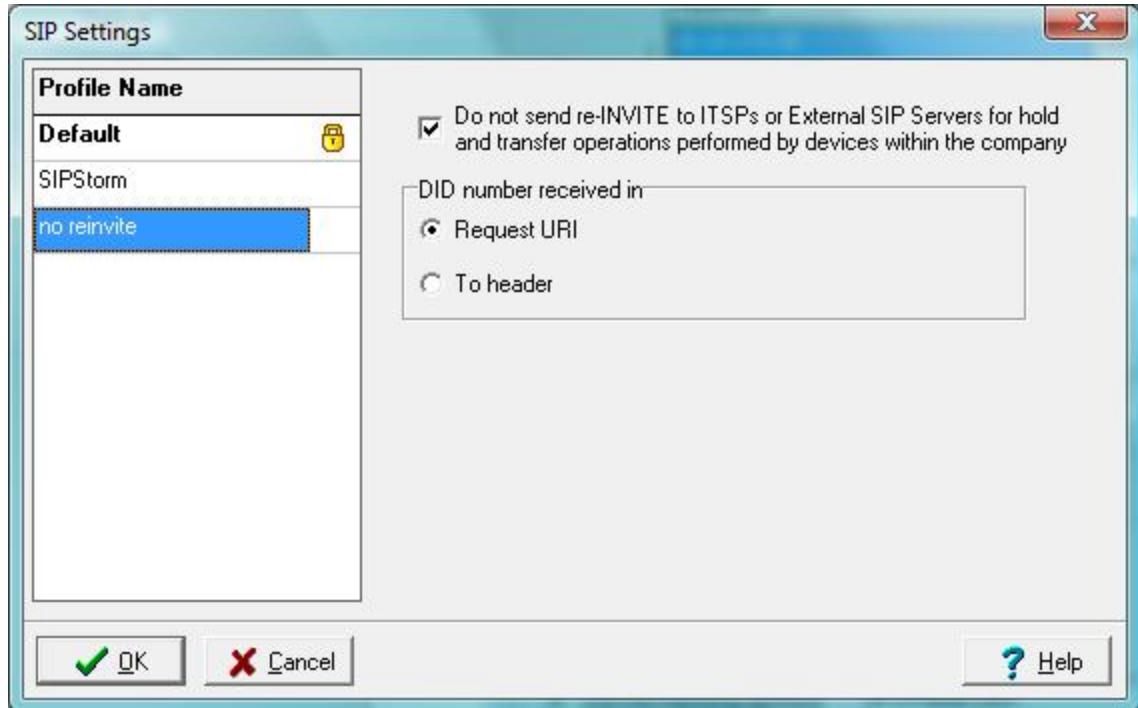
The properties table defines connection, registration, and SIP packet characteristics for the SIP server highlighted in the Servers table. The text at the top of the table, above the Servers List, identifies the server configured by the Properties table.

- **Servers List:** This table section defines the access address of the selected SIP Server:
- **Request using DNS_SRV:** Select this option to specify an FQDN that is associated with the desired SIP server. The MX uses the DNS server to resolve the IP address and port of the server.
- **Use the following servers:** Select this option to specify one or more SIP Server addresses (using dotted decimal notation or FQDN) and port number configurations through which the MX performs voice calls. To add server addresses to the table, place the cursor in the table and right click the mouse.
- **Registration:** This section specifies the registration parameters that allow the MX to register as a client to the selected SIP server.
- **Register:** Place a mark in this selection box to enable the MX to register as a client to the specified SIP Server.
- **User Name:** This parameter specifies the string that is specified as the user name in the From field for INVITE packets sent from the MX to the SIP Server if the Registration parameter is enabled. The From field derives the Domain name on the basis of the Domain in From Header parameter.

- **Timeout:** This parameter specifies the registration period for the MX. This parameter is valid only if the Registration option is selected.
- **Domain in "From" Header:** For INVITE messages that are sent from the MX through the SIP Server, this parameter specifies the display name and URL that is placed in the From Header:
 - Select Use address of the MX to specify the MX as the originator address.
 - Select Change to MX domain if device belongs to user to specify the MX as the originator address if the MX receives the message from an MX User. If the message is received from an unknown user (such a message may be received from a external source through the SIP server), the MX does not alter the From header.
 - Select Use address of the Server to specify the SIP server as the originator address.
 - Select Use the following address, and then enter an IP address, to specify another unrelated address as the originator address.

1.2 Create a custom SIP Profile

Click on SIP Profiles button,



Create a new profile named “No Re-INVITE”, select the option not to send re-INVITES and to look for the DID numbers in the “Request URI”. Click the OK button to save the options and close the window

1.2.1 Parameter Table

Parameter table settings are applied to each circuit to which the profile is assigned.

- **Do not send Re-Invite for internal hold and transfer operations:** This parameter affects the MX operation when calls involving external devices are placed on hold or transferred.
- When this option is selected, the MX responds to a hold or transfer request by the internal phone by playing music on hold for the external device. When the call is resumed, the MX replaces the music on hold with the new audio stream from the internal device.

- When this option is not selected, the MX responds to a hold or transfer request by the internal phone by sending a re-invite to the external device, which causes the recipient to stop sending media packets. The call is resumed through the sending of a subsequent re-invite.
- ***DID number received in:*** This parameter specifies the line within a SIP request that lists the DID number of the recipient.

Press the OK button to accept all SIP Settings changes and return to the SIP Servers and ITSP panel. Changes to the SIP Settings panel are not saved to the database until the Apply button on the SIP Servers and ITSP panel is subsequently pressed.

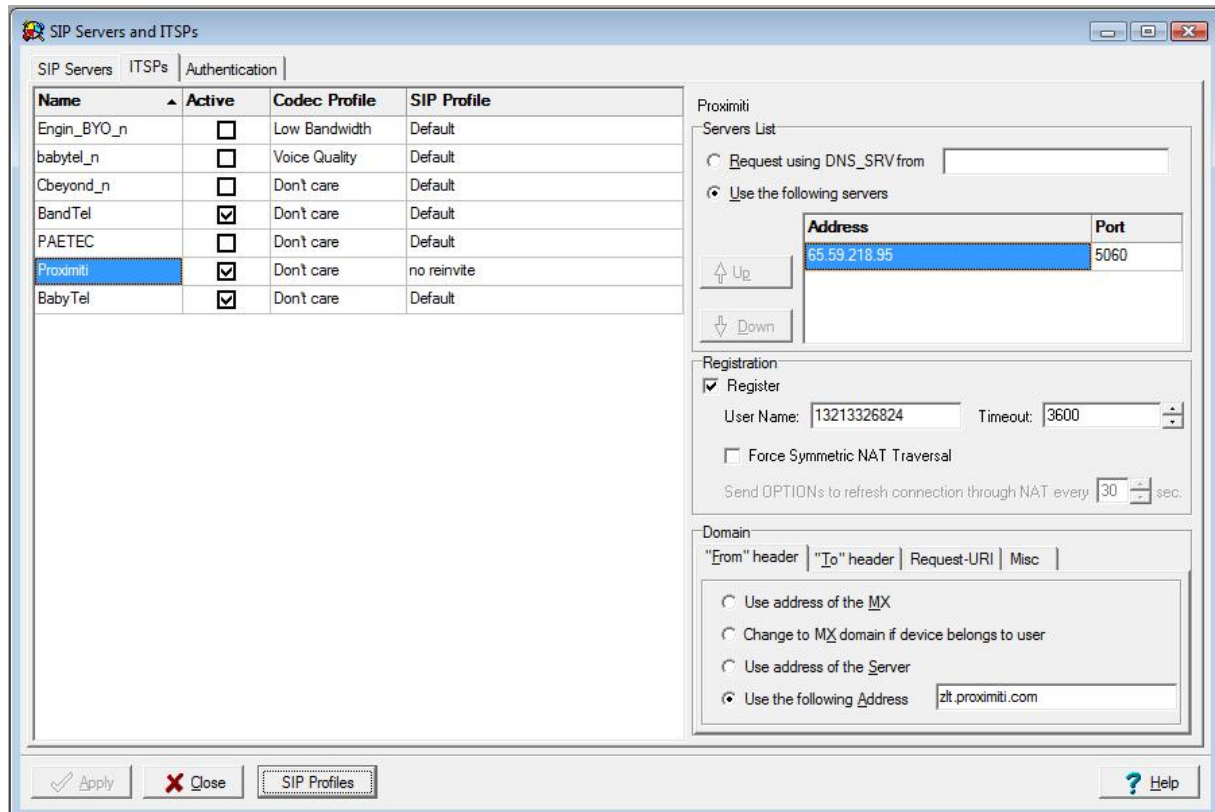
Press the Cancel button to discard all SIP Settings changes and return to the SIP Servers and ITSP panel. Changes to the SIP Settings panel can also be discarded by pressing the Cancel button on the SIP Servers and ITSP panel.

1.3 Configure the account

Enter the following information

- Name: Proximiti
- Active: Check
- Codec Profile: Don't Care
- SIP Profile: no reinvite (the new profile you created before)
- Use the following servers: the IP address given to you by Proximiti
- Port: 5060
- Register: checked
- Username: user name/phone number given by Proximiti
- From header: Use the following address: address given to you by Proximiti
- To header: Use the following address: address given to you by Proximiti
- Request-URI: IP Address

- Misc: nothing checked



Name	Active	Codec Profile	SIP Profile
Engin_BYO_n	<input type="checkbox"/>	Low Bandwidth	Default
babytel_n	<input type="checkbox"/>	Voice Quality	Default
Cbeyond_n	<input type="checkbox"/>	Don't care	Default
BandTel	<input checked="" type="checkbox"/>	Don't care	Default
PAETEC	<input type="checkbox"/>	Don't care	Default
Proximiti	<input checked="" type="checkbox"/>	Don't care	no reinvite
BabyTel	<input checked="" type="checkbox"/>	Don't care	Default

Proximiti

Servers List

Request using DNS_SRV from []

Use the following servers

Address	Port
65.59.218.95	5060

Registration

Register

User Name: 13213326824 Timeout: 3600

Force Symmetric NAT Traversal

Send OPTIONS to refresh connection through NAT every 30 sec.

Domain

"From" header | **"To" header** | Request-URI | Misc

Use address of the MX

Change to MX domain if device belongs to user

Use address of the Server

Use the following Address: zlt.proximiti.com



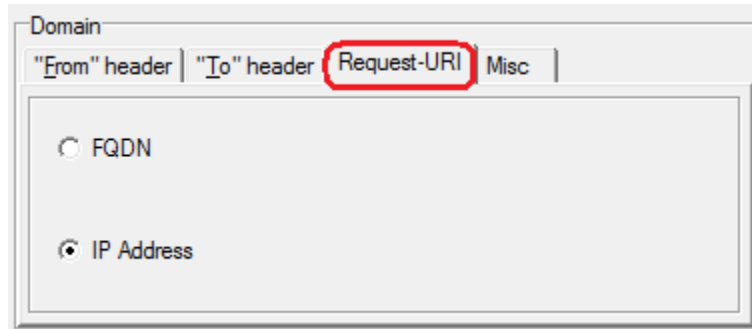
Domain

"From" header | **"To" header** | Request-URI | Misc

Use the domain name for the appropriate server in the Servers List

Use resolved IP addresses for the appropriate server in the Servers List

Use custom domain name: zlt.proximiti.com

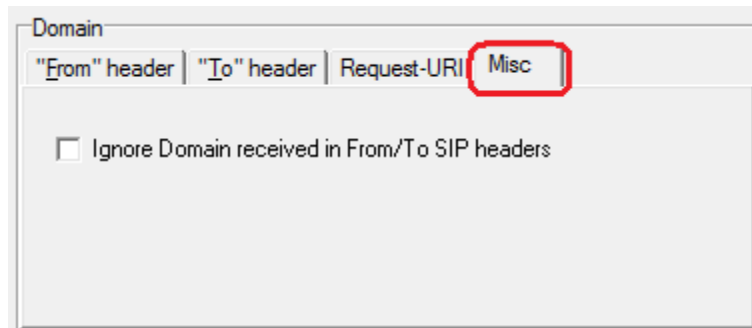


Domain

"From" header | "To" header | **Request-URI** | Misc

FQDN

IP Address



Domain

"From" header | "To" header | Request-URI | **Misc**

Ignore Domain received in From/To SIP headers

1.4 Authentication

The authentication tab is used to define the authentication information for realm based authentication.

1.4.1 Table Parameters

Each row corresponds to a Protection Domain that the MX is allowed to access.

Realm: This parameter specifies the domain name of the realm. This must match the domain that is offering the challenge.

User Name: This parameter specifies the User Name under which the MX is allowed to access the realm.

Password: This parameter specifies the password that the MX uses to authenticate itself with the realm.

1.4.2 Editing the Table

To add to a realm, access the Realm panel by right clicking in the table and selecting Add.

To edit a realm, access the Realm panel by double clicking in one of the Realm entries cells or select a Realm, press the right mouse button, and select Edit.

To remove a realm from the table, select the realm, right click the mouse, and select Delete from the menu.