

## babyTEL Quick Start ITSP Setup

Author: Zultys Technical Support

This document covers how to set up a babyTEL account. This is a quick set up guide. It assumes you are familiar with all of the ITSP Setup and ALG fields and tables in the Zultys MX. For further details, and more detailed steps, please refer to Document 0000000127 babyTEL.pdf available from Zultys Technical Support

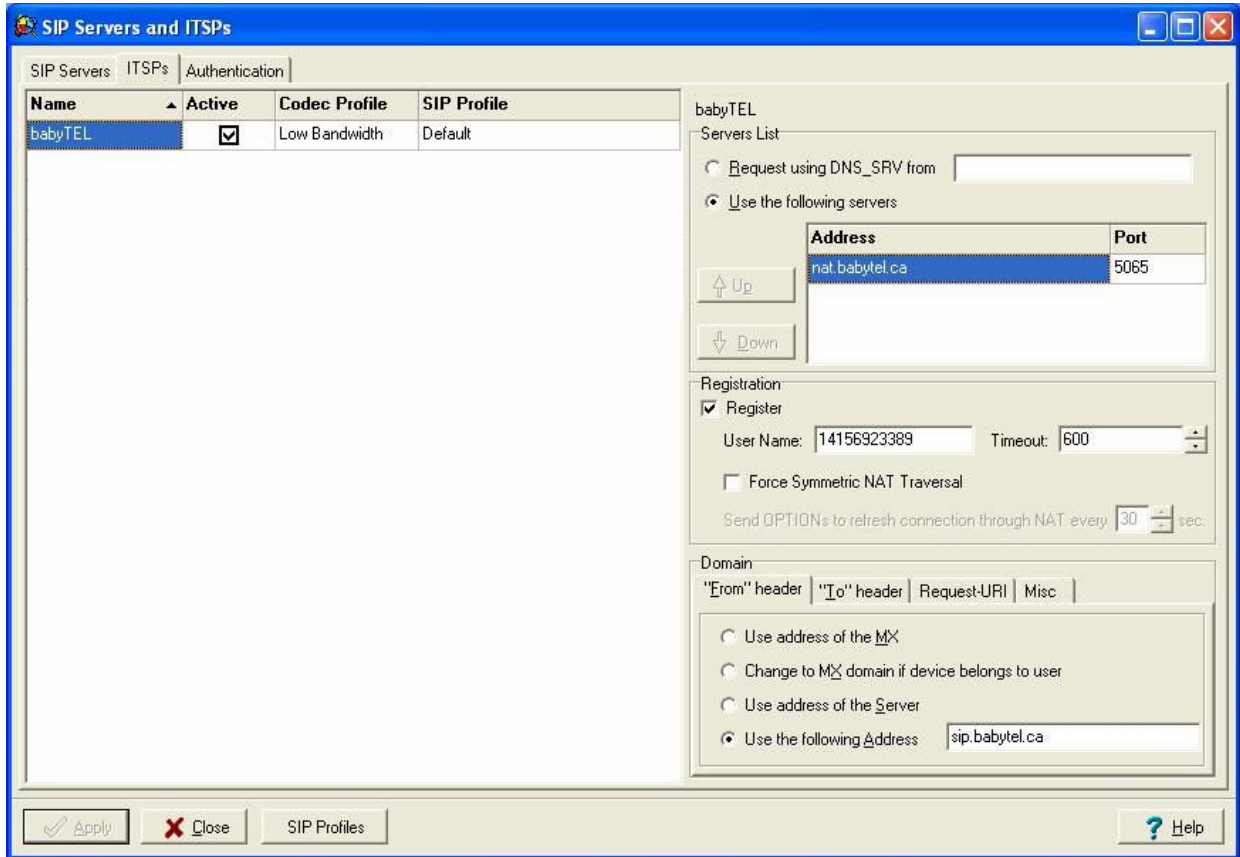
## Contents

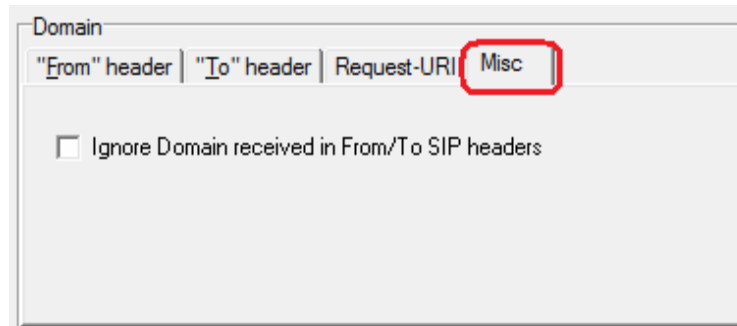
1.1	CONFIGURE THE ACCOUNT.....	2
1.2	AUTHENTICATION.....	4
1.3	SET UP ALG.....	4

### *1.1 Configure the account*

Enter the following information

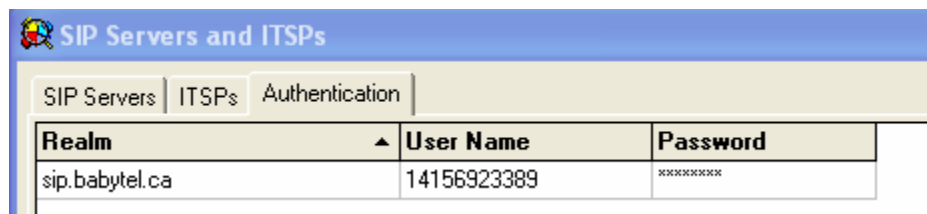
- Name: babyTEL
- Active: Check
- Codec Profile: Low Bandwidth
- SIP Profile: Default
- Use the following servers: nat.babyTEL.ca
- Port: 5065
- Register: checked
- Username: user name/phone number given by babyTEL
- From header: Use the following address sip.babytel.ca
- To header: Use the custom domain name sip.babytel.ca
- Request-URI: IP sip.babytel.ca
- Misc: nothing checked





### 1.2 Authentication

The authentication tab is used to define the authentication information for realm based authentication.



### 1.3 Set Up ALG

Set up ALG in *Provision / ALG*

