



PAETEC Quick Start ITSP Setup (Legacy US LEC)

Author: Zultys Technical Support

This document covers how to set up a PAETEC account. This is a quick set up guide. It assumes you are familiar with all of the ITSP Setup and ALG fields and tables in the Zultys MX.

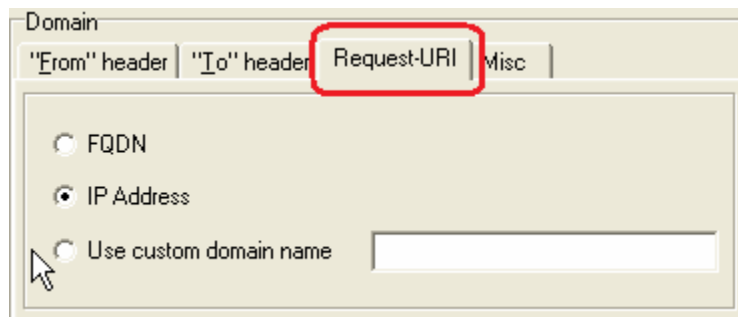
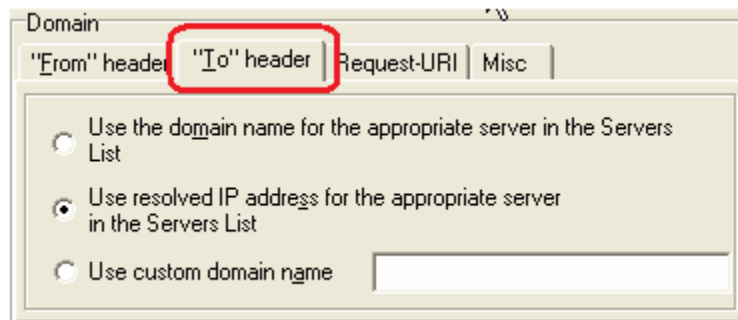
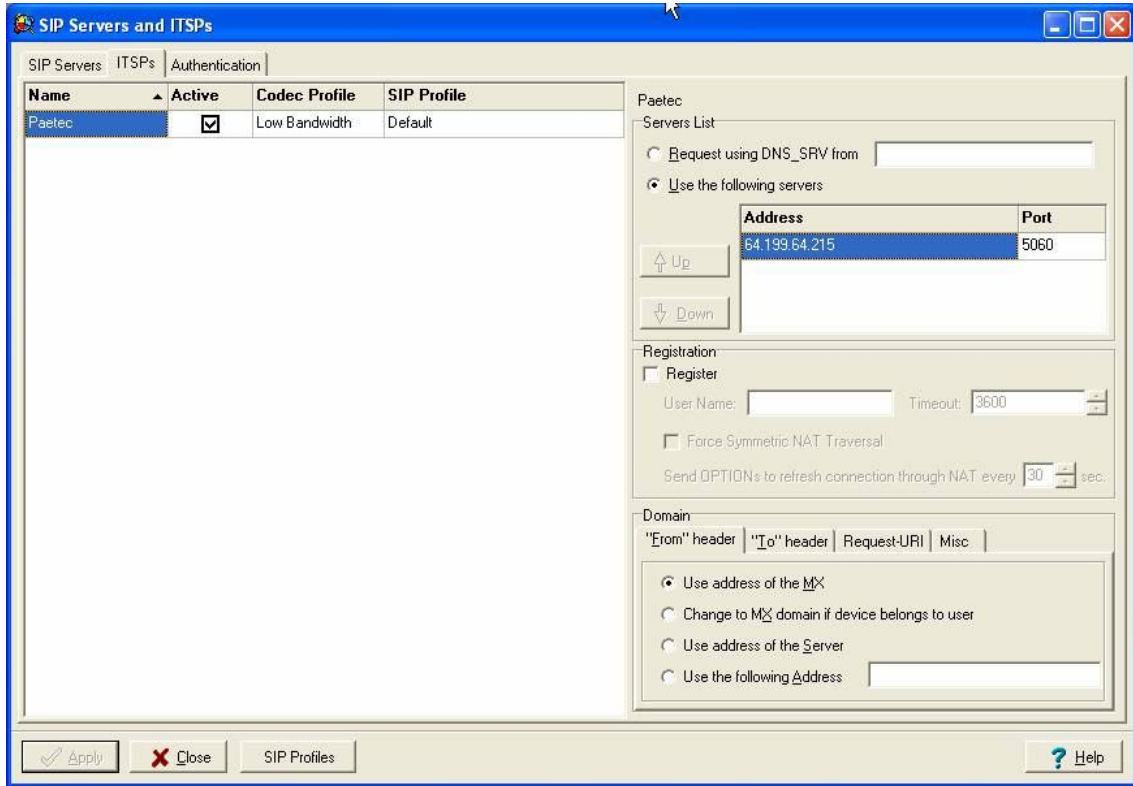
Contents

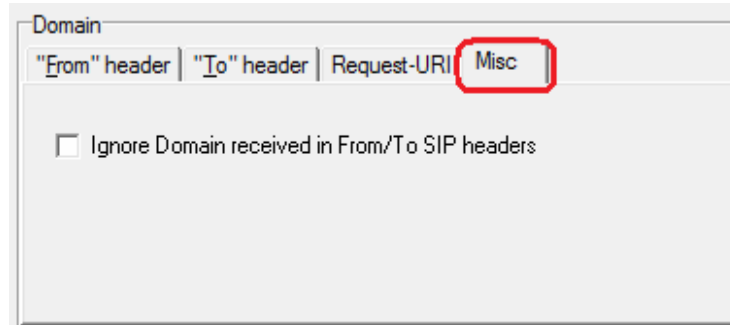
1	CONFIGURE THE ACCOUNT	2
2	AUTHENTICATION.....	4
3	CHANGE SIP SESSION TIMER.....	5
4	SET UP ALG.....	6
4.1	CAVEAT.....	6
4.2	CERTIFIED FIRMWARE AND EQUIPMENT REVISIONS	7

1 Configure the account

Enter the following information

- Name: PAETEC
- Active: Check
- Codec Profile: Don't Care
- SIP Profile: Default
- Use the following servers: the FQDN address given to you by PAETEC
- Port: 5060
- Register: unchecked
- Username: Blank, PAETEC does not require Registration
- From header: Use the address of the MX
- To header: Use the resolved IP address for the appropriate server in the Servers List
- Request-URI: IP Address
- Misc: nothing checked



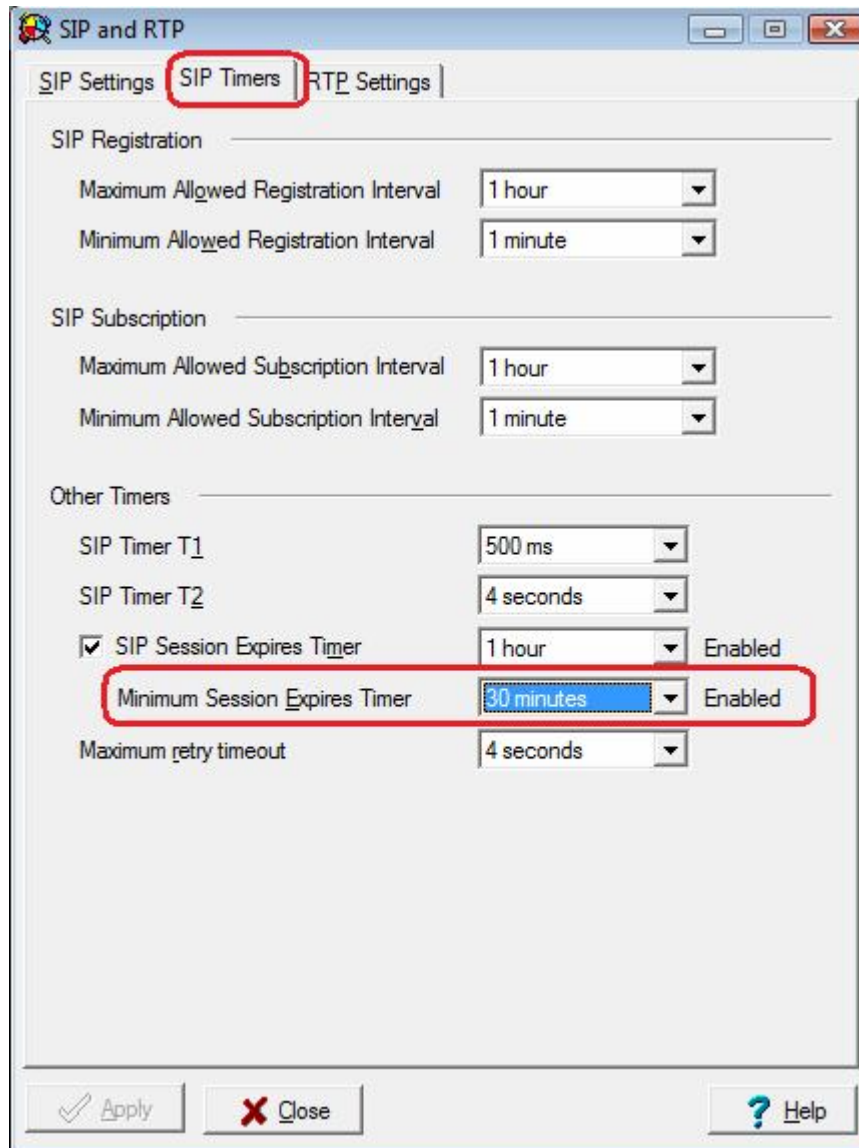


2 *Authentication*

The authentication tab is not used.

3 *Change SIP Session Timer*

If the Minimum SIP Session timer is less than 30 minutes, outbound calls will fail. To change this timer go to Provision → SIP and RTP, click on the SIP Timers tab.

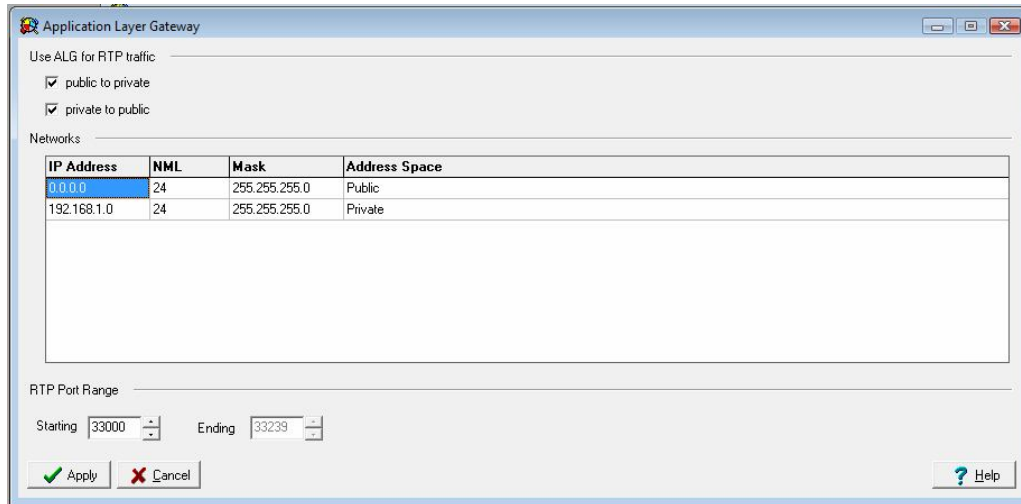


The screenshot shows the 'SIP and RTP' configuration window with the 'SIP Timers' tab selected. The 'SIP Timers' tab is highlighted with a red box. The 'Minimum Session Expires Timer' is also highlighted with a red box and set to '30 minutes'. The 'SIP Session Expires Timer' is checked and set to '1 hour'. Other timers are set to '500 ms', '4 seconds', and '4 seconds'.

Category	Parameter	Value	Status
SIP Registration	Maximum Allowed Registration Interval	1 hour	
	Minimum Allowed Registration Interval	1 minute	
SIP Subscription	Maximum Allowed Subscription Interval	1 hour	
	Minimum Allowed Subscription Interval	1 minute	
Other Timers	SIP Timer T1	500 ms	
	SIP Timer T2	4 seconds	
	<input checked="" type="checkbox"/> SIP Session Expires Timer	1 hour	Enabled
	<input checked="" type="checkbox"/> Minimum Session Expires Timer	30 minutes	Enabled
	Maximum retry timeout	4 seconds	

4 Set Up ALG

Set up ALG in *Provision / ALG*



4.1 Caveat

Per PAETEC:" to accomplish proper transfer of calls from *PSTN back to PSTN via AA*, the PAETEC switch SW version 7.1 or higher is required.

4.2 Certified firmware and equipment revisions

Zultys IP Telephony Solution Components	
MX250	Software Version 4.2.14
MX30	Software Version 4.2.14
ZIP5 series	Software Version 2.4
ZIP4x4	Software Version 1.4.22
ZIP2x2	Software Version 1.2.28
Zultys Softphone	Software Version 4.2.14
ALG model – MX250	Software Version 4.2.14
Legacy McLeodUSA SIP Trunking Solution Components	
C3/8000/G9	6.0
Acme Packet Session Border Controller	2.01P64