



PAETEC ITSP Quick Setup (Legacy PAETEC)

Author: Zultys Technical Support

This document covers how to set up a PAETEC account. For ITSP Accounts ALG is required. For further information on ALG please refer to the ALG documentation available from Zultys Technical Support. This is a quick set up guide. It assumes you are familiar with all of the ITSP Setup and ALG fields and tables in the Zultys MX.

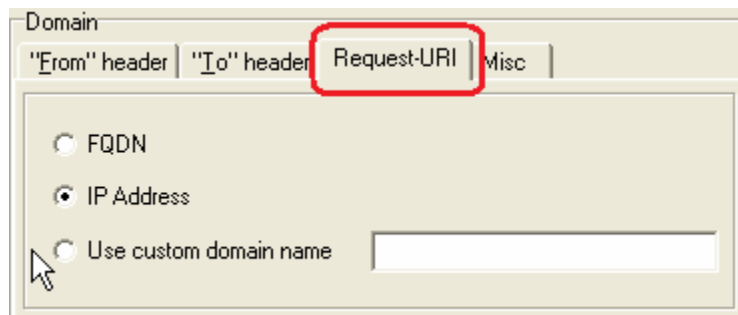
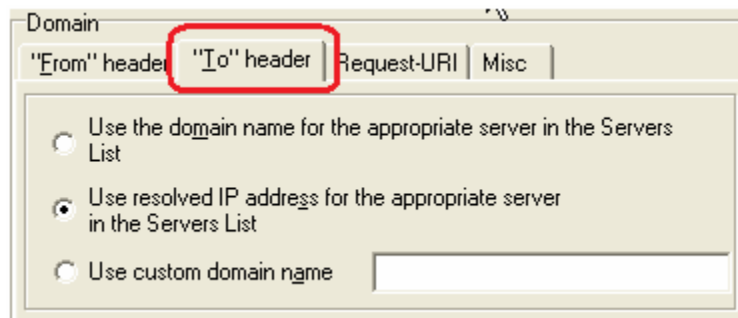
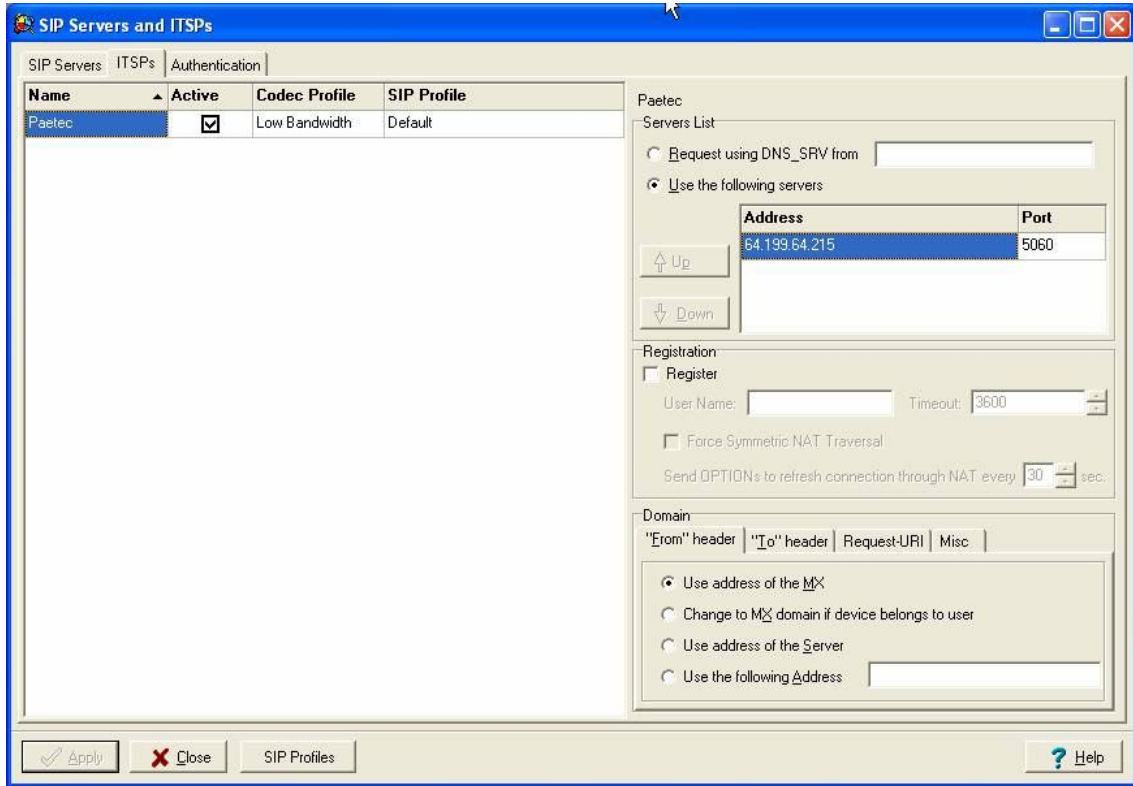
Contents

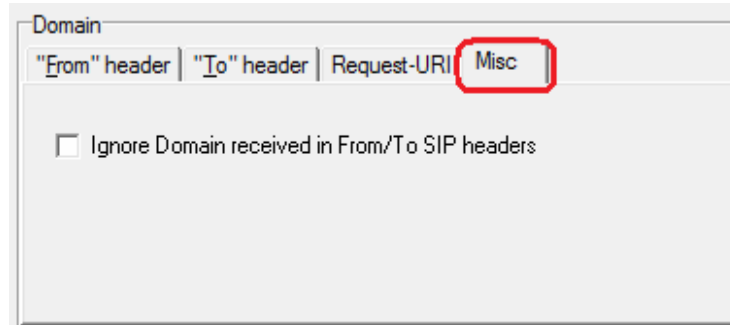
1.1	CREATE ITSP ACCOUNT.....	2
1.2	AUTHENTICATION	4
1.3	SET UP ALG	4
1.4	CAVEAT.....	4
1.5	CERTIFIED FIRMWARE AND EQUIPMENT REVISIONS	5

1.1 Create ITSP Account

Enter the following information

- Name: PAETEC
- Active: Check
- Codec Profile: Don't Care
- SIP Profile: Default
- Use the following servers: the FQDN address given to you by PAETEC
- Port: 5060
- Register: unchecked
- Username: Blank, PAETEC does not require Registration
- From header: Use the address of the MX
- To header: Use the resolved IP address for the appropriate server in the Servers List
- Request-URI: IP Address
- Misc: nothing checked



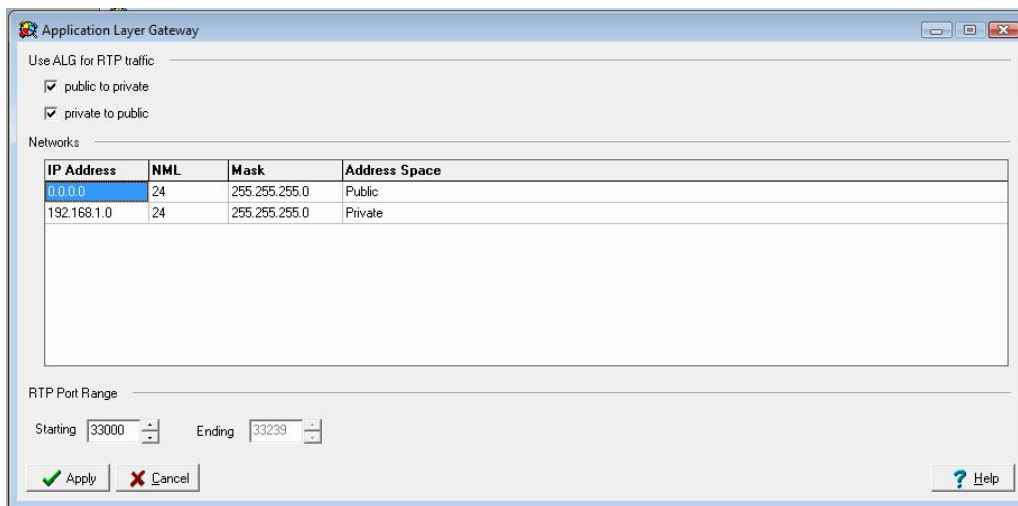


1.2 Authentication

The authentication tab is not used.

1.3 Set Up ALG

Set up ALG in *Provision / ALG*



1.4 Caveat

On the PAETEC switches there needs to be a modification, per PAETEC: "When trunk groups are created on PAETEC switches, NPDI Suspension needs to be added. This is to prevent the presence of NPDI in the REQUEST header."

1.5 Certified firmware and equipment revisions

Zultys IP Telephony Solution Components	
MX250	Software Version 4.2.14
MX30	Software Version 4.2.14
ZIP5 series	Software Version 2.4
ZIP4x4	Software Version 1.4.22
ZIP2x2	Software Version 1.2.28
Zultys Softphone	Software Version 4.2.14
ALG model – MX250	Software Version 4.2.14
Legacy McLeodUSA SIP Trunking Solution Components	
LGP	6.3.1.2SP3
Session Border Controller	2.01P64