



PAETEC ITSP Quick Start (Legacy McLeodUSA)

Author: Zultys Technical Support

This document covers how to set up a PAETEC account. This is a quick set up guide. It assumes you are familiar with all of the ITSP Setup and ALG fields and tables in the Zultys MX.

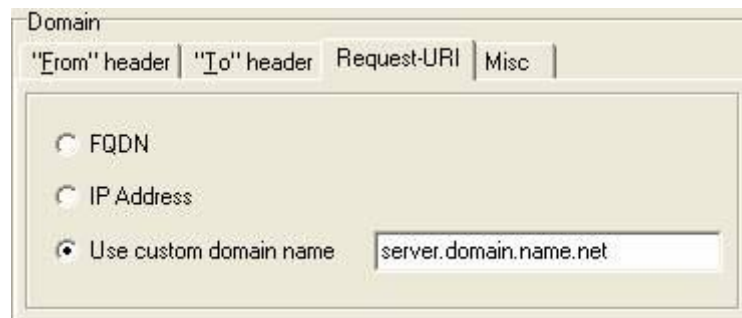
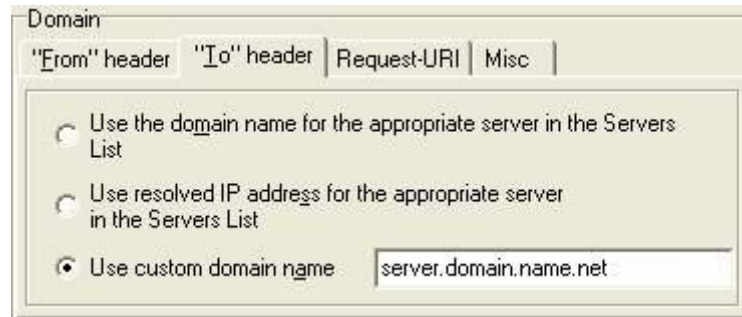
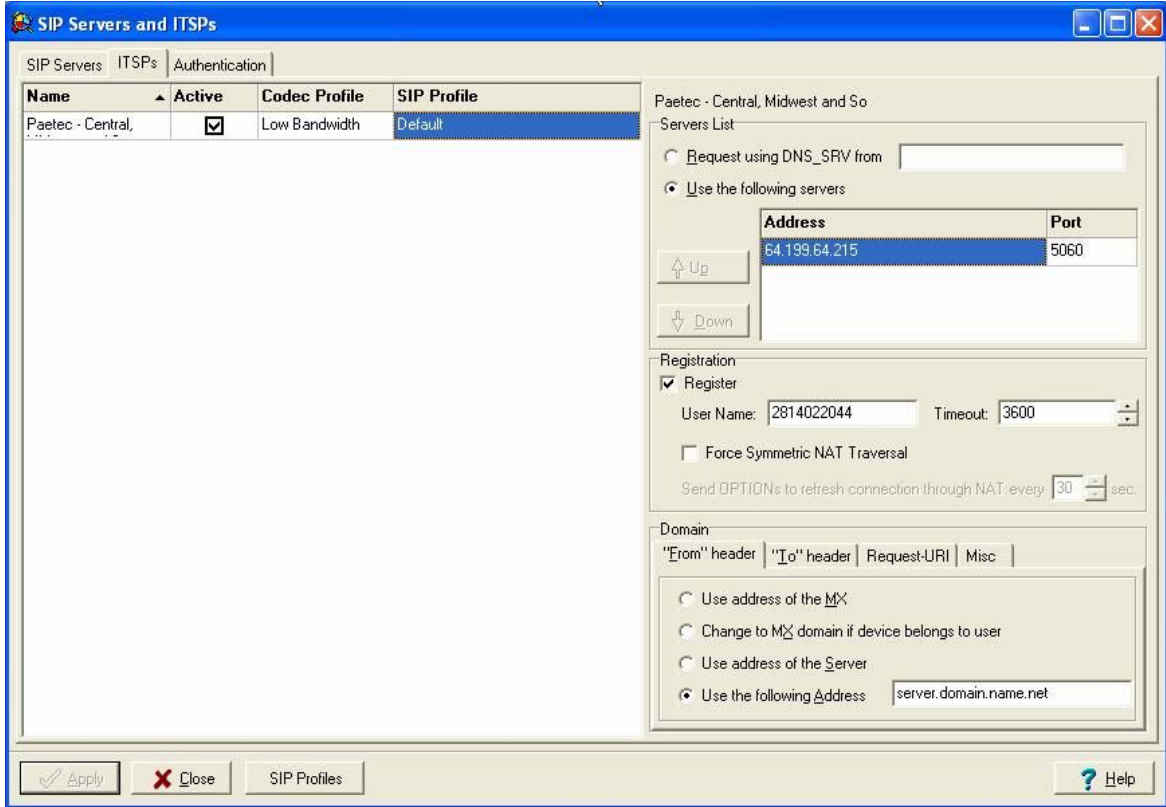
Contents

1.1	CONFIGURE THE ACCOUNT.....	2
1.2	AUTHENTICATION	4
1.3	SET UP ALG	4
1.4	CERTIFIED FIRMWARE AND EQUIPMENT REVISIONS	5

1.1 Configure the account

Enter the following information

- Name: PAETEC
- Active: Check
- Codec Profile: Don't Care
- SIP Profile: Default
- Use the following servers: the IP address given to you by PAETEC
- Port: 5060
- Register: checked
- Username: **user name/phone number given by PAETEC**
- From header: **Use the sip server domain name provided by PAETEC**
- To header: **Use the sip server domain name provided by PAETEC**
- Request-URI: **Use the sip server domain name provided by PAETEC**
- Misc: nothing checked



Domain

"From" header | "To" header | Request-URI | **Misc**

Ignore Domain received in From/To SIP headers

1.2 Authentication

The authentication tab is used to define the authentication information for realm based authentication.

SIP Servers ITSPs Authentication		
Realm	User Name	Password
BroadWorks	2814022044	XXXXXXXXXX

1.3 Set Up ALG

Set up ALG in *Provision / ALG*

Application Layer Gateway

Use ALG for RTP traffic

public to private

private to public

Networks

IP Address	NML	Mask	Address Space
0.0.0.0	24	255.255.255.0	Public
192.168.1.0	24	255.255.255.0	Private

RTP Port Range

Starting 33000 Ending 33239

Apply Cancel Help

1.4 *Certified firmware and equipment revisions*

Zultys IP Telephony Solution Components	
MX250	Software Version 4.2.14
MX30	Software Version 4.2.14
ZIP5 series	Software Version 2.4
ZIP4x4	Software Version 1.4.22
ZIP2x2	Software Version 1.2.28
Zultys Softphone	Software Version 4.2.14
ALG model – MX250	Software Version 4.2.14
Legacy McLeodUSA SIP Trunking Solution Components	
Application Server	R14 SP1
PSTN Gateway	V3.10.1.7.xp19
Session Border Controller	V3.3.6