



BandTel ITSP Quick Setup

Author: Zultys Technical Support

This document covers how to set up a BandTel account. This is a quick set up guide. It assumes you are familiar with all of the ITSP Setup and ALG fields and tables in the Zultys MX. For further details, and more detailed steps, please refer to Document 0000000119 NexVortex.pdf available from Zultys Technical Support

Contents

1.1	CREATE ITSP ACCOUNT	2
1.2	CONFIGURE THE ACCOUNT	2
1.3	AUTHENTICATION.....	4
1.4	SET UP ALG.....	4

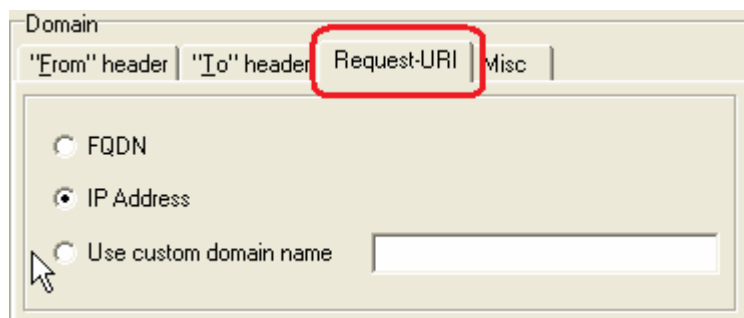
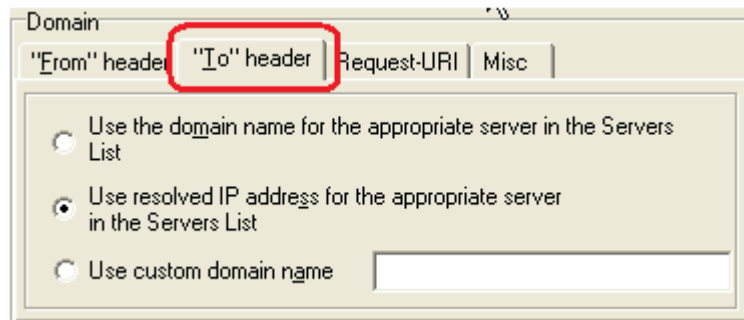
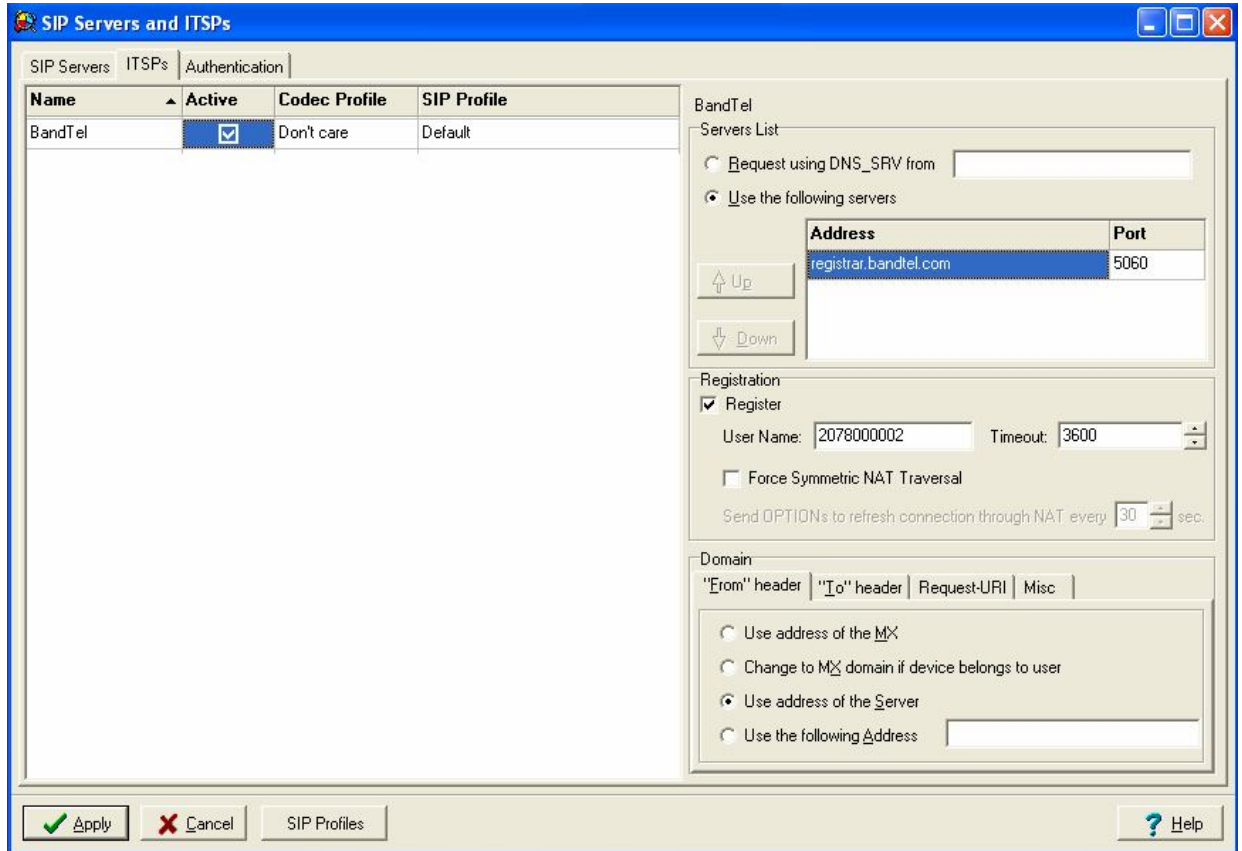
1.1 Create ITSP Account

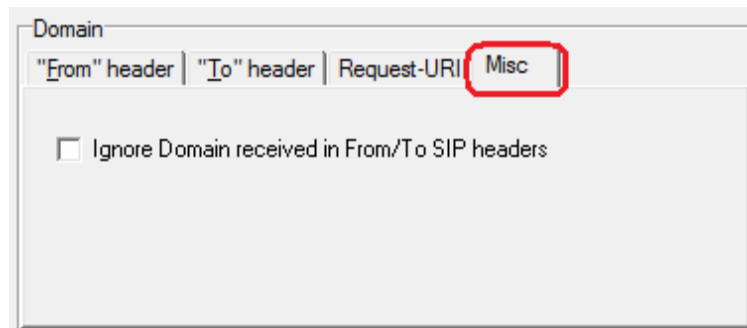
In the Admin UI goto Provision → SIP servers and ITSPs

1.2 Configure the account

Enter the following information

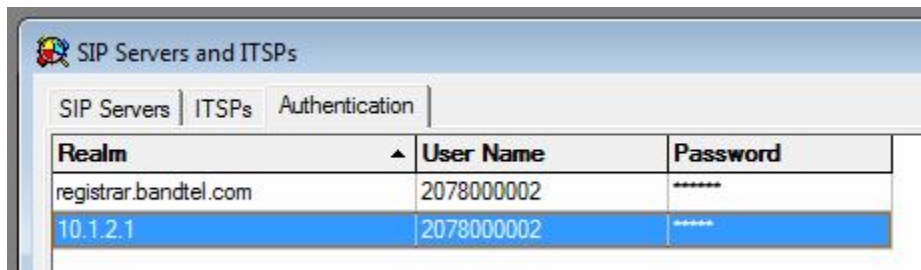
- Name: BandTel
- Active: Check
- Codec Profile: Don't Care
- SIP Profile: Default
- Use the following servers: the FQDN address given to you by BandTel
- Port: 5060
- Register: checked
- Username: user name/phone number given by BandTel
- From header: Use the address of the MX
- To header: Use the resolved IP address for the appropriate server in the Servers List
- Request-URI: IP Address
- Misc: nothing checked





1.3 Authentication

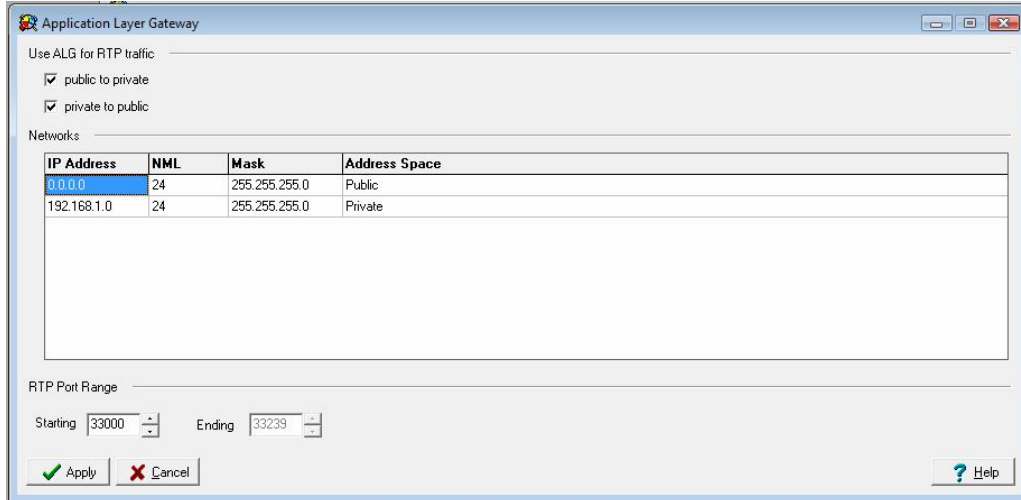
The authentication tab is used to define the authentication information for realm based authentication.



This second registration entry is required because when the call is made, BandTel requested Authorization, the MX was challenged with realm="10.1.2.1". If it is not configured, the system will append username="anonymous".

1.4 Set Up ALG

Set up ALG in *Provision / ALG*



Application Layer Gateway

Use ALG for RTP traffic

- public to private
- private to public

Networks

IP Address	NML	Mask	Address Space
0.0.0.0	24	255.255.255.0	Public
192.168.1.0	24	255.255.255.0	Private

RTP Port Range

Starting Ending